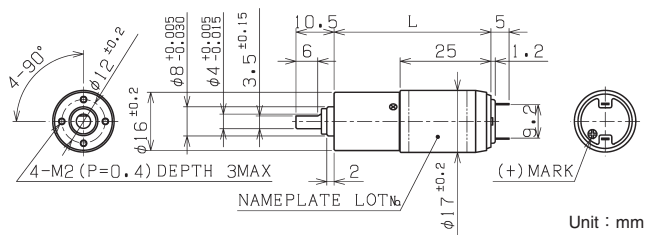


φ 17ギヤードモータ Gear Motor

コアレスモータ Coreless Motor

コアレスモータ Coreless Motor	SCR17-25××	page40
遊星ギヤヘッド Planetary Gearhead	IG-16V	page62



IG-16VM-SRU2501A-06 DC6V 起動電流 Starting current 2310mA									
減速比 Reduction Ratio (1/i)	無負荷回転数 No-Load Speed min ⁻¹	定格回転数 Rated Speed min ⁻¹	定格トルク Rated Torque			起動トルク Starting Torque mNm	長さ(L) Length mm	回転方向 Direction of rotation	
			mNm	kg·cm	oz·in				
19	515	430	24.5	0.25	3.47	(148)	43.2	CW	
23	418	351	29.4	0.30	4.17	(183)	43.2	CW	
29	340	288	34.3	0.35	4.86	(224)	43.2	CW	
84	117	97.5	88.3	0.9	12.5	(530)	46.8	CW	
103	95.4	79.3	108	1.1	15.3	(640)	46.8	CW	
127	77.4	64.9	127	1.3	18.1	(786)	46.8	CW	
157	62.9	52.1	167	1.7	23.6	(973)	46.8	CW	
369	26.8	22.2	314	3.2	44.5	(1829)	50.4	CW	
455	21.7	18.1	382	3.9	54.2	(2303)	50.4	CW	
560	17.7	14.6	481	4.9	68.1	(2746)	50.4	CW	
690	14.3	12.3	490	5.0	69.5	(3504)	50.4	CW	
850	11.6	10.3	490	5.0	69.5	(4372)	50.4	CW	

IG-16VM-SRU2502A-06 DC6V 起動電流 Starting current 1660mA									
減速比 Reduction Ratio (1/i)	無負荷回転数 No-Load Speed min ⁻¹	定格回転数 Rated Speed min ⁻¹	定格トルク Rated Torque			起動トルク Starting Torque mNm	長さ(L) Length mm	回転方向 Direction of rotation	
			mNm	kg·cm	oz·in				
19	419	357	19.6	0.20	2.78	(132)	43.2	CW	
23	340	289	24.5	0.25	3.47	(163)	43.2	CW	
29	276	236	29.4	0.30	4.17	(203)	43.2	CW	
84	95.6	80.5	73.5	0.75	10.4	(465)	46.8	CW	
103	77.7	65.0	93.2	0.95	13.2	(570)	46.8	CW	
127	63.1	53.4	108	1.1	15.3	(703)	46.8	CW	
157	51.2	43.1	137	1.4	19.4	(866)	46.8	CW	
369	21.8	18.3	265	2.7	37.5	(1651)	50.4	CW	
455	17.7	14.9	324	3.3	45.8	(2048)	50.4	CW	
560	14.4	12.1	402	4.1	57.0	(2517)	50.4	CW	
690	11.7	9.82	490	5.0	69.5	(3049)	50.4	CW	
850	9.48	8.25	490	5.0	69.5	(3777)	50.4	CW	

IG-16VM-SRU2503A-06 DC6V 起動電流 Starting current 1220mA									
減速比 Reduction Ratio (1/i)	無負荷回転数 No-Load Speed min ⁻¹	定格回転数 Rated Speed min ⁻¹	定格トルク Rated Torque			起動トルク Starting Torque mNm	長さ(L) Length mm	回転方向 Direction of rotation	
			mNm	kg·cm	oz·in				
19	349	304	14.7	0.15	2.08	(114)	43.2	CW	
23	283	244	19.6	0.20	2.78	(142)	43.2	CW	
29	230	198	24.5	0.25	3.47	(176)	43.2	CW	
84	79.5	67.1	63.7	0.65	9.03	(408)	46.8	CW	
103	64.5	54.5	78.5	0.8	11.1	(506)	46.8	CW	
127	52.4	44.1	98.1	1.0	13.9	(619)	46.8	CW	
157	42.5	36.0	118	1.2	16.7	(772)	46.8	CW	
369	18.1	15.2	235	2.4	33.3	(1467)	50.4	CW	
455	14.7	12.4	284	2.9	40.3	(1815)	50.4	CW	
560	11.9	10.0	353	3.6	50.0	(2211)	50.4	CW	
690	9.70	8.12	441	4.5	62.5	(2707)	50.4	CW	
850	7.88	6.72	490	5.0	69.5	(3329)	50.4	CW	

IG-16VM-SRU2505A-12 DC12V 起動電流 Starting current 1310mA									
減速比 Reduction Ratio (1/i)	無負荷回転数 No-Load Speed min ⁻¹	定格回転数 Rated Speed min ⁻¹	定格トルク Rated Torque			起動トルク Starting Torque mNm	長さ(L) Length mm	回転方向 Direction of rotation	
			mNm	kg·cm	oz·in				
19	519	446	24.5	0.25	3.47	(174)	43.2	CW	
23	421	364	29.4	0.30	4.17	(217)	43.2	CW	
29	342	298	34.3	0.35	4.86	(267)	43.2	CW	
84	118	101	88.3	0.9	12.5	(613)	46.8	CW	
103	96.1	82.4	108	1.1	15.3	(758)	46.8	CW	
127	78.0	67.3	127	1.3	18.1	(926)	46.8	CW	
157	63.3	54.1	167	1.7	23.6	(1149)	46.8	CW	
369	27.0	23.1	314	3.2	44.5	(2174)	50.4	CW	
455	21.9	18.8	382	3.9	54.2	(2699)	50.4	CW	
560	17.8	15.2	481	4.9	68.1	(3293)	50.4	CW	
690	14.4	12.7	490	5.0	69.5	(4151)	50.4	CW	
850	11.7	10.6	490	5.0	69.5	(5212)	50.4	CW	

IG-16VM-SRU2506A-12 DC12V 起動電流 Starting current 877mA									
減速比 Reduction Ratio (1/i)	無負荷回転数 No-Load Speed min ⁻¹	定格回転数 Rated Speed min ⁻¹	定格トルク Rated Torque			起動トルク Starting Torque mNm	長さ(L) Length mm	回転方向 Direction of rotation	
			mNm	kg·cm	oz·in				
19	435	356	24.5	0.25	3.47	(135)	43.2	CW	
23	353	291	29.4	0.30	4.17	(167)	43.2	CW	
29	286	239	34.3	0.35	4.86	(209)	43.2	CW	
84	99.1	80.8	88.3	0.9	12.5	(478)	46.8	CW	
103	80.4	65.7	108	1.1	15.3	(591)	46.8	CW	
127	65.3	53.8	127	1.3	18.1	(721)	46.8	CW	
157	53.0	43.1	167	1.7	23.6	(894)	46.8	CW	
369	22.6	18.4	314	3.2	44.5	(1690)	50.4	CW	
455	18.3	15.0	382	3.9	54.2	(2118)	50.4	CW	
560	14.9	12.1	481	4.9	68.1	(2560)	50.4	CW	
690	12.1	10.2	490	5.0	69.5	(3121)	50.4	CW	
850	9.82	8.59	490	5.0	69.5	(3912)	50.4	CW	

IG-16VM-SRU2507A-12 DC12V 起動電流 Starting current 610mA									
減速比 Reduction Ratio (1/i)	無負荷回転数 No-Load Speed min ⁻¹	定格回転数 Rated Speed min ⁻¹	定格トルク Rated Torque			起動トルク Starting Torque mNm	長さ(L) Length mm	回転方向 Direction of rotation	
			mNm	kg·cm	oz·in				
19	349	290	19.6	0.20	2.78	(116)	43.2	CW	
23	283	234	24.5	0.25	3.47	(142)	43.2	CW	
29	230	185	34.3	0.35	4.86	(175)	43.2	CW	
84	79.6	64.2	78.5	0.8	11.1	(406)	46.8	CW	
103	64.6	51.9	98.1	1.0	13.9	(499)	46.8	CW	
127	52.5	42.4	118	1.2	16.7	(613)	46.8	CW	
157	42.6	34.3	147	1.5	20.8	(754)	46.8	CW	
369	18.1	14.6	284	2.9	40.3	(1469)	50.4	CW	
455	14.7	11.8	353	3.6	50.0	(1789)	50.4	CW	
560	12.0	9.61	431	4.4	61.1	(2164)	50.4	CW	
690	9.71	7.95	490	5.0	69.5	(2703)	50.4	CW	
850	7.89	6.72	490	5.0	69.5	(3304)	50.4	CW	

IG-16VM-SRU2508A-24 DC24V 起動電流 Starting current 756mA									
減速比 Reduction Ratio (1/i)	無負荷回転数 No-Load Speed min ⁻¹	定格回転数 Rated Speed min ⁻¹	定格トルク Rated Torque			起動トルク Starting Torque mNm	長さ(L) Length mm	回転方向 Direction of rotation	
			mNm	kg·cm	oz·in				
19	569	491	24.5	0.25	3.47	(179)	43.2	CW	
23	462	400	29.4	0.30	4.17	(219)	43.2	CW	
29	375	328	34.3	0.35	4.86	(274)	43.2	CW	
84	130	112	88.3	0.9	12.5	(638)	46.8	CW	
103	105	90.7	108	1.1	15.3	(793)	46.8	CW	
127	85.6	74.1	127	1.3	18.1	(945)	46.8	CW	
157	69.5	59.6	167	1.7	23.6	(1172)	46.8	CW	
369	29.6	25.4	314	3.2	44.5	(2213)	50.4	CW	
455	24.0	20.7	382	3.9	54.2	(2778)	50.4	CW	
560	19.5	16.7	481	4.9	68.1	(3350)	50.4	CW	
690	15.8	14.0	490	5.0	69.5	(4301)	50.4	CW	
850	12.9	11.6	490	5.0	69.5	(4862)	50.4	CW	

IG-16VM-SRU2509A-24 DC24V 起動電流 Starting current 448mA									
減速比 Reduction Ratio (1/i)	無負荷回転数 No-Load Speed min ⁻¹	定格回転数 Rated Speed min ⁻¹	定格トルク Rated Torque			起動トルク Starting Torque mNm	長さ(L) Length mm	回転方向 Direction of rotation	
			mNm	kg·cm	oz·in				
19	423	349	24.5	0.25	3.47	(140)	43.2	CW	
23	343	285	29.4	0.30	4.17	(174)	43.2	CW	
29	278	234	34.3	0.35	4.86	(217)	43.2	CW	
84	96.3	79.2	88.3	0.9	12.5	(497)	46.8	CW	
103	78.2	64.4	108	1.1	15.3	(612)	46.8	CW	
127	63.5	52.8	127	1.3	18.1	(754)	46.8	CW	
157	51.6	42.3	167	1.7	23.6	(927)	46.8	CW	
369	22.0	18.1	314	3.2	44.5	(1771)	50.4	CW	
455	17.8	14.7	382	3.9	54.2	(2193)	50.4	CW	
560	14.5	11.9	481	4.9	68.1	(2683)	50.4	CW	
690	11.8	10.0	490	5.0	69.5	(3212)	50.4	CW	
850	9.55	8.40	490	5.0	69.5	(4069)	50.4	CW	

：標準品 Standard
：特注品 Custom-made

1. 上記データは参考値です。
2. 上記スペックは一例で、要望スペックにて承ります。

The above data is for reference only.
The above specifications are an example and your specifications are welcomed.