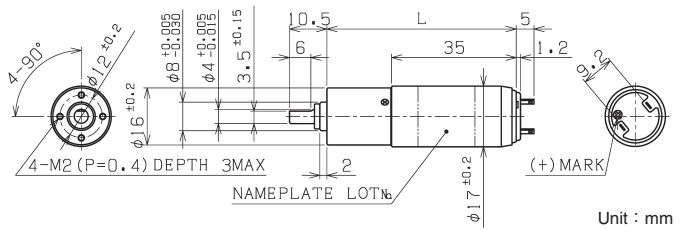


コアレスモータ Coreless Motor **SCR17-35××** page41

遊星ギヤヘッド Planetary Gearhead **IG-16V** page62



Unit : mm

IG-16VM-SRU3551B-06 DC6V 起動電流 Starting current 1040mA								
減速比 Reduction Ratio (1/i)	無負荷回転数 No-Load Speed min <sup>-1</sup>	定格回転数 Rated Speed min <sup>-1</sup>	定格トルク Rated Torque			起動トルク Starting Torque mNm	長さ(L) Length mm	回転方向 Direction of rotation
			mNm	kg·cm	oz·in			
19	242	184	34.3	0.35	4.86	(143)	53.2	CW
23	197	147	44.1	0.45	6.25	(174)	53.2	CW
29	160	120	53.9	0.55	7.64	(216)	53.2	CW
84	55.2	41.3	127	1.3	18.1	(504)	56.8	CW
103	44.9	33.5	157	1.6	22.2	(618)	56.8	CW
127	36.4	27.1	196	2.0	27.8	(767)	56.8	CW
157	29.6	22.2	235	2.4	33.3	(940)	56.8	CW
369	12.6	9.36	461	4.7	65.3	(1793)	60.4	CW
455	10.2	7.96	490	5.0	69.5	(2231)	60.4	CW
560	8.31	6.81	490	5.0	69.5	(2715)	60.4	CW
690	6.74	5.76	490	5.0	69.5	(3370)	60.4	CW
850	5.48	4.82	490	5.0	69.5	(4068)	60.4	CW

IG-16VM-SRU3552B-06 DC6V 起動電流 Starting current 827mA								
減速比 Reduction Ratio (1/i)	無負荷回転数 No-Load Speed min <sup>-1</sup>	定格回転数 Rated Speed min <sup>-1</sup>	定格トルク Rated Torque			起動トルク Starting Torque mNm	長さ(L) Length mm	回転方向 Direction of rotation
			mNm	kg·cm	oz·in			
19	202	159	29.4	0.30	4.17	(138)	53.2	CW
23	164	131	34.3	0.35	4.86	(170)	53.2	CW
29	133	105	44.1	0.45	6.25	(209)	53.2	CW
84	46.1	35.8	108	1.1	15.3	(483)	56.8	CW
103	37.5	28.8	137	1.4	19.4	(591)	56.8	CW
127	30.4	23.5	167	1.7	23.6	(736)	56.8	CW
157	24.7	19.1	206	2.1	29.2	(909)	56.8	CW
369	10.5	8.12	392	4.0	55.6	(1729)	60.4	CW
455	8.54	6.60	481	4.9	68.1	(2117)	60.4	CW
560	6.94	5.63	490	5.0	69.5	(2596)	60.4	CW
690	5.63	4.77	490	5.0	69.5	(3208)	60.4	CW
850	4.57	4.01	490	5.0	69.5	(3999)	60.4	CW

IG-16VM-SRU3551B-12 DC12V 起動電流 Starting current 2270mA								
減速比 Reduction Ratio (1/i)	無負荷回転数 No-Load Speed min <sup>-1</sup>	定格回転数 Rated Speed min <sup>-1</sup>	定格トルク Rated Torque			起動トルク Starting Torque mNm	長さ(L) Length mm	回転方向 Direction of rotation
			mNm	kg·cm	oz·in			
19	502	448	34.3	0.35	4.86	(319)	53.2	CW
23	407	362	44.1	0.45	6.25	(399)	53.2	CW
29	331	294	53.9	0.55	7.64	(482)	53.2	CW
84	114	101	127	1.3	18.1	(1114)	56.8	CW
103	92.9	82.4	157	1.6	22.2	(1389)	56.8	CW
127	75.4	66.8	196	2.0	27.8	(1718)	56.8	CW
157	61.3	54.1	245	2.5	34.7	(2086)	56.8	CW
369	26.1	23.0	471	4.8	66.7	(3966)	60.4	CW
455	21.2	19.1	490	5.0	69.5	(4947)	60.4	CW
560	17.2	15.8	490	5.0	69.5	(6020)	60.4	CW
690	14.0	13.1	490	5.0	69.5	(7622)	60.4	CW
850	11.3	10.7	490	5.0	69.5	(9228)	60.4	CW

IG-16VM-SRU3553B-12 DC12V 起動電流 Starting current 1310mA								
減速比 Reduction Ratio (1/i)	無負荷回転数 No-Load Speed min <sup>-1</sup>	定格回転数 Rated Speed min <sup>-1</sup>	定格トルク Rated Torque			起動トルク Starting Torque mNm	長さ(L) Length mm	回転方向 Direction of rotation
			mNm	kg·cm	oz·in			
19	368	286	53.9	0.55	7.64	(242)	53.2	CW
23	299	235	63.7	0.65	9.03	(298)	53.2	CW
29	243	191	78.5	0.8	11.1	(367)	53.2	CW
84	84.0	65.6	186	1.9	26.4	(849)	56.8	CW
103	68.2	52.9	235	2.4	33.3	(1048)	56.8	CW
127	55.4	43.2	284	2.9	40.3	(1290)	56.8	CW
157	45.0	35.0	353	3.6	50.0	(1589)	56.8	CW
369	19.2	16.0	490	5.0	69.5	(2940)	60.4	CW
455	15.6	13.5	490	5.0	69.5	(3640)	60.4	CW
560	12.6	11.3	490	5.0	69.5	(4749)	60.4	CW
690	10.3	9.36	490	5.0	69.5	(5369)	60.4	CW
850	8.33	7.74	490	5.0	69.5	(6918)	60.4	CW

IG-16VM-SRU3554B-12 DC12V 起動電流 Starting current 951mA								
減速比 Reduction Ratio (1/i)	無負荷回転数 No-Load Speed min <sup>-1</sup>	定格回転数 Rated Speed min <sup>-1</sup>	定格トルク Rated Torque			起動トルク Starting Torque mNm	長さ(L) Length mm	回転方向 Direction of rotation
			mNm	kg·cm	oz·in			
19	302	235	49.0	0.50	6.95	(221)	53.2	CW
23	245	192	58.8	0.60	8.34	(272)	53.2	CW
29	199	155	73.5	0.75	10.4	(332)	53.2	CW
84	68.9	54.1	167	1.7	23.6	(777)	56.8	CW
103	55.9	43.9	206	2.1	29.2	(960)	56.8	CW
127	45.4	35.6	255	2.6	36.1	(1181)	56.8	CW
157	36.9	28.7	324	3.3	45.8	(1458)	56.8	CW
369	15.7	12.9	490	5.0	69.5	(2748)	60.4	CW
455	12.8	10.9	490	5.0	69.5	(3301)	60.4	CW
560	10.4	9.14	490	5.0	69.5	(4044)	60.4	CW
690	8.41	7.61	490	5.0	69.5	(5151)	60.4	CW
850	6.83	6.30	490	5.0	69.5	(6315)	60.4	CW

IG-16VM-SRU3560B-24 DC24V 起動電流 Starting current 855mA								
減速比 Reduction Ratio (1/i)	無負荷回転数 No-Load Speed min <sup>-1</sup>	定格回転数 Rated Speed min <sup>-1</sup>	定格トルク Rated Torque			起動トルク Starting Torque mNm	長さ(L) Length mm	回転方向 Direction of rotation
			mNm	kg·cm	oz·in			
19	430	348	49.0	0.50	6.95	(257)	53.2	CW
23	349	284	58.8	0.60	8.34	(316)	53.2	CW
29	283	230	73.5	0.75	10.4	(392)	53.2	CW
84	98.0	79.9	167	1.7	23.6	(904)	56.8	CW
103	79.6	64.2	216	2.2	30.6	(1116)	56.8	CW
127	64.6	52.1	265	2.7	37.5	(1370)	56.8	CW
157	52.5	42.4	324	3.3	45.8	(1684)	56.8	CW
369	22.3	18.9	490	5.0	69.5	(3214)	60.4	CW
455	18.1	15.9	490	5.0	69.5	(4031)	60.4	CW
560	14.7	13.3	490	5.0	69.5	(5145)	60.4	CW
690	12.0	11.0	490	5.0	69.5	(5880)	60.4	CW
850	9.71	9.07	490	5.0	69.5	(7434)	60.4	CW

IG-16VM-SRU3557B-24 DC24V 起動電流 Starting current 692mA								
減速比 Reduction Ratio (1/i)	無負荷回転数 No-Load Speed min <sup>-1</sup>	定格回転数 Rated Speed min <sup>-1</sup>	定格トルク Rated Torque			起動トルク Starting Torque mNm	長さ(L) Length mm	回転方向 Direction of rotation
			mNm	kg·cm	oz·in			
19	354	284	53.9	0.55	7.64	(273)	53.2	CW
23	288	229	68.6	0.70	9.72	(335)	53.2	CW
29	234	186	83.4	0.85	11.8	(407)	53.2	CW
84	80.8	64.3	196	2.0	27.8	(960)	56.8	CW
103	65.6	52.5	235	2.4	33.3	(1177)	56.8	CW
127	53.3	42.5	294	3.0	41.7	(1451)	56.8	CW
157	43.3	34.5	363	3.7	51.4	(1786)	56.8	CW
369	18.4	15.8	490	5.0	69.5	(3468)	60.4	CW
455	15.0	13.2	490	5.0	69.5	(4083)	60.4	CW
560	12.2	11.0	490	5.0	69.5	(4982)	60.4	CW
690	9.87	9.11	490	5.0	69.5	(6364)	60.4	CW
850	8.01	7.51	490	5.0	69.5	(7850)	60.4	CW

IG-16VM-SRU3554B-24 DC24V 起動電流 Starting current 2020mA								
減速比 Reduction Ratio (1/i)	無負荷回転数 No-Load Speed min <sup>-1</sup>	定格回転数 Rated Speed min <sup>-1</sup>	定格トルク Rated Torque			起動トルク Starting Torque mNm	長さ(L) Length mm	回転方向 Direction of rotation
			mNm	kg·cm	oz·in			
19	590	535	49.0	0.50	6.95	(526)	53.2	CW
23	479	435	58.8	0.60	8.34	(640)	53.2	CW
29	389	353	73.5	0.75	10.4	(794)	53.2	CW
84	135	122	177	1.8	25.0	(1838)	56.8	CW
103	109	98.8	216	2.2	30.6	(2308)	56.8	CW
127	88.7	80.3	265	2.7	37.5	(2798)	56.8	CW
157	72.0	65.0	333	3.4	47.2	(3425)	56.8	CW
369	30.7	28.4	490	5.0	69.5	(6540)	60.4	CW
455	24.9	23.4	490	5.0	69.5	(8134)	60.4	CW
560	20.2	19.2	490	5.0	69.5	(9898)	60.4	CW
690	16.4	15.8	490	5.0	69.5	(13393)	60.4	CW
850	13.3	12.9	490	5.0	69.5	(16293)	60.4	CW

■ : 標準品 Standard 1. 上記データは参考値です。 The above data is for reference only.  
■ : 特注品 Custom-made 2. 上記スペックは一例で、要望スペックにて承ります。 The above specifications are an example and your specifications are welcomed.